



St. Croix County Public Health Community Health Assessment 2025

Contents

St. Croix County Public Health Community Health Assessment 2025.....1

 Executive Summary3

 St. Croix County Public Health and the Local Health System4

 Frameworks and Timeline5

 Partnerships and Community Engagement.....6

 Data Assessment and Findings7

 Primary Data: Community Health Assessment Survey.....7

 Primary Data: Community Conversations8

 Secondary Data.....8

 Community Assets or Resources 11

 Prioritization of Health Issues..... 11

 Process..... 11

 Identified Priorities 12

 Next Steps..... 12

 Community Health Improvement Planning (CHIP)..... 12

 References 13

 Appendices 13

 Appendix A. Survey Tools 13

 Appendix B. Survey Results 14

 Appendix C. Community Conversations Dashboard..... 14

 Appendix D. Secondary Data Dashboard..... 14

 Appendix E. SHIP 15

 Appendix F. Resource List..... 15

 Appendix G. Community Partners..... 17

Executive Summary

The Community Health Assessment (CHA) is a systematic process used to understand the health status, needs, and health priorities of St. Croix County. Per State of Wisconsin Administrative code DHS 140.04 and according to accreditation standards of the Public Health Accreditation Board (PHAB); St. Croix County Public Health (SCCPH) conducts a CHA to develop a Community Health Improvement Plan (CHIP) at least every five years. This current CHA will inform the 2026 to 2030 St. Croix County CHIP.

To effectively assess community health needs and guide prioritization planning, SCCPH utilized Mobilizing for Action through Planning and Partnerships (MAPP) 2.0 framework in conjunction with the 2014 County Health Rankings model. The MAPP 2.0 framework developed by the National Association of County and City Health Officials offers a three-phase approach to guide community health improvement processes¹. The County Health Rankings model, developed by the Robert Wood Johnson Foundation and University of Wisconsin Population Health Institute, offers a broad view of health highlighting the role of health behaviors, clinical care, social and economic factors, and the physical environment for health outcomes².

A variety of health data was compiled for the CHA. Primary data was collected through a community wide survey, focus groups, and key informant interviews. Secondary quantitative data for St. Croix County was compiled from multiple sources. The cumulative data was shared with over 600 partners and community members who were invited to attend a Community Needs Forum. At the forum, following discussion and review of the data, stakeholders voted on community health priorities. The resulting identified needs were reviewed and backed by the results of the CHA data collected to establish two top priorities. The selected top health priorities align with Wisconsin's 2023-2027 State Health Improvement Plan (SHIP) and are the priorities for the 2026-2030 St. Croix County CHIP:



As this plan is developed SCCPH will reach out to its community partners in a call to action. Together we will develop goals, objectives, and action plans that are measured and adapted as needed to improve the health of the county over the five years of the plan.

St. Croix County Public Health and the Local Health System

SCCPH is a Wisconsin Level III Health Department, established in 1936 in response to a statewide tuberculosis crisis³. In 1994, it became part of the St. Croix County Health and Human Services Department. In September 2014, SCCPH earned national accreditation from PHAB, and reaccredited in 2022, reflecting its commitment to excellence in public health practice.

Guided by the Health and Human Services Board, which serves as the local board of health, St. Croix County Public Health is dedicated to protecting and promoting health, preventing disease and injury, and empowering communities to lead healthier lives. To achieve this mission, the department acts as a health strategist—collaborating with a wide range of partners to enhance community well-being through direct client services and population-level health initiatives.

The health care system in St. Croix County is robust and diverse comprising of four hospitals, numerous clinics, nursing homes, assisted living, a variety of nonprofit and business organizations, and St. Croix County Health and Human Services which includes Public Health. Together these entities form a network of health care for the community. Due to the county's proximity to the Twin City metro area, residents also have access to additional healthcare resources across the border.

Historically, through direct implementation efforts of the Healthier Together (HT) Coalition, St. Croix and Pierce County collaborated through a joint CHA and CHIP. However, for the current cycle, Pierce and St. Croix have decided to each develop county specific CHA and CHIP documents, to best serve the diverse needs of our counties. The HT coalition, comprised of community members and organizations, continues to support health improvement work. We do this by providing opportunities for networking, information and resource sharing, and collaboration on strategic initiatives that improve the health of Pierce & St. Croix communities. SCCPH continues to serve on the leadership team for HT which allows for continued collaboration between the counties, health care systems, and United Way to help maximize impact and strategic alignment related to our CHA and CHIP.

Frameworks and Timeline

To effectively assess the health of our community, it is important to understand the many factors that influence health, how they interact, and how they can guide action.

St. Croix County Public Health adapted elements of two frameworks to shape the CHA and guide our next CHIP. The MAPP 2.0 framework (Figure 1), developed by the National Association of County and City Health Officials, was utilized to guide the CHA process¹ and community engagement. We adjusted elements of the 3-phase model to best enhance and support our capacity for community engagement throughout the CHA/CHIP process, as seen in the timeline below.

Additionally, the 2014 County Health Rankings Model (Figure 2) was used to inform our CHA, guide data collection, and support prioritization efforts². Developed by the Robert Wood Johnson Foundation in collaboration with the University of Wisconsin Population Health Institute, this model offers a broad view of health, recognizing that health is shaped by more than just medical care. It highlights the role of health behaviors, clinical care, social and economic factors, and the physical environment in shaping community well-being.

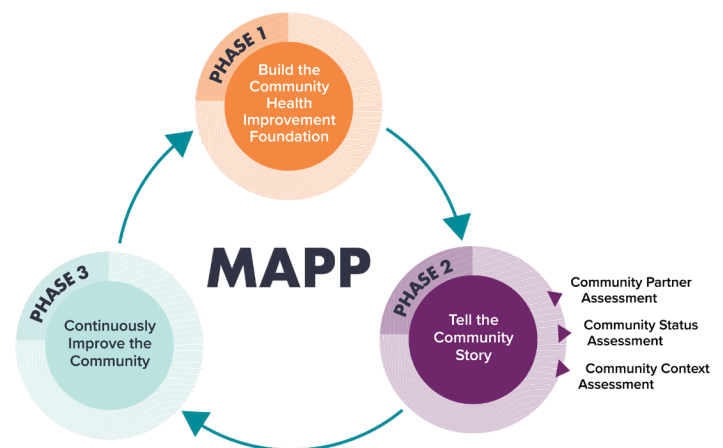


Figure 1. MAPP 2.0 Framework

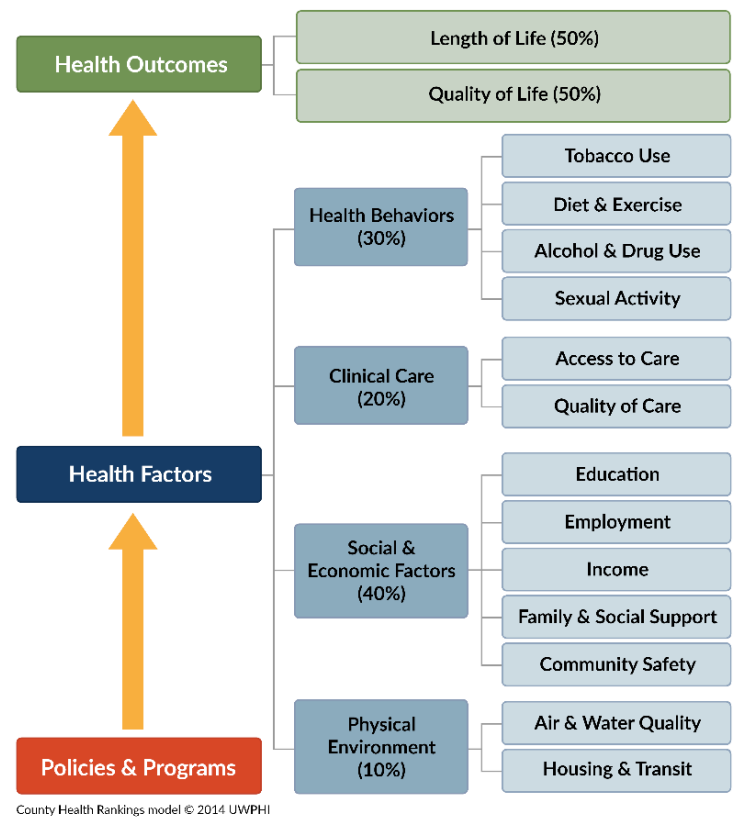
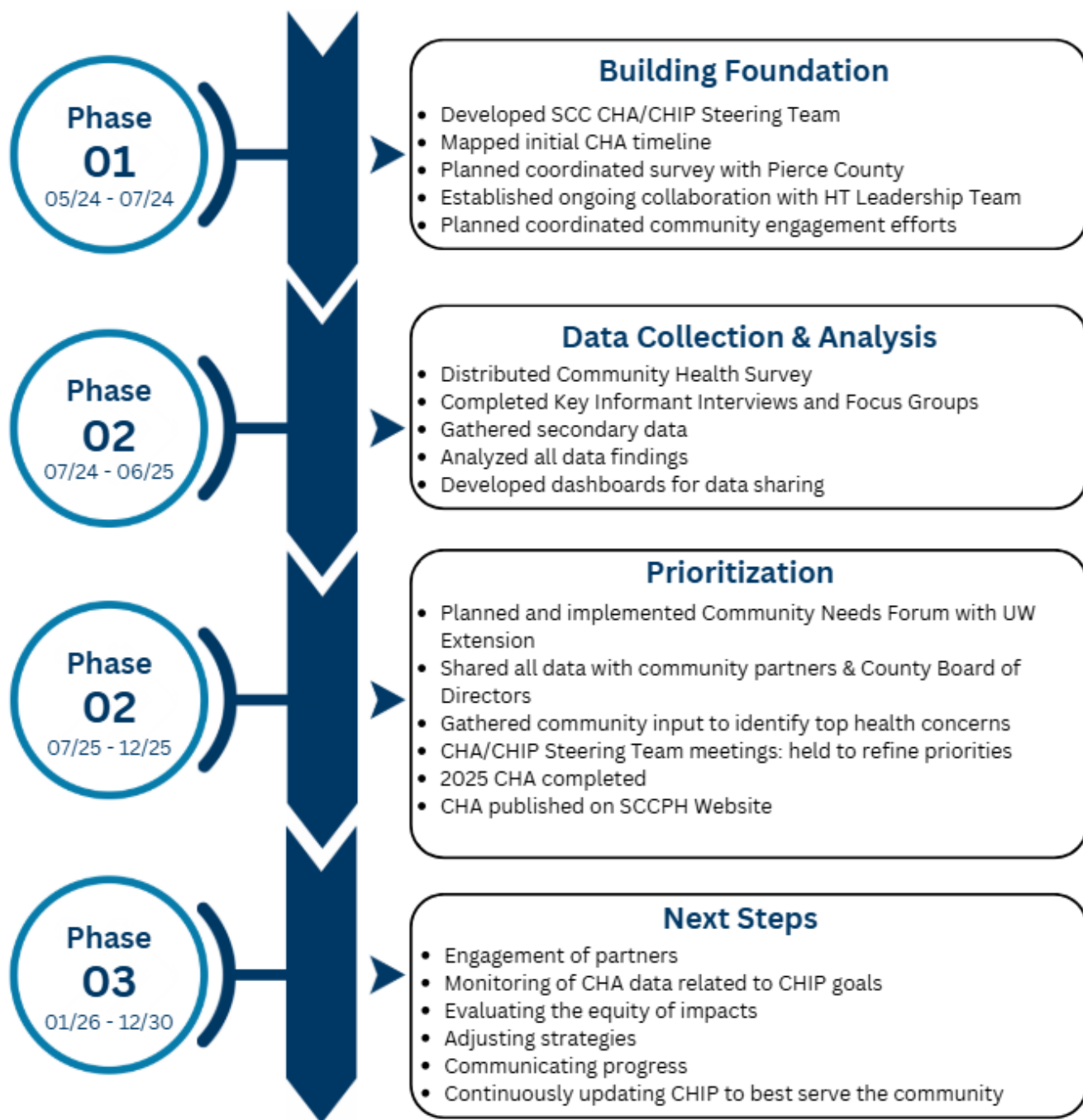


Figure 2. 2014 County Health Rankings Model



Partnerships and Community Engagement

Community engagement was a central component of this health assessment process, ensuring that diverse voices were heard and that the resulting priorities reflect the true needs and values of the community. Partners that represent various sectors of the community were involved in the planning and implementation phases of the CHA. They include the Pierce-St. Croix County Healthier Together Leadership Team; HealthPartners, Allina

Health, and Western Wisconsin Health area hospital and clinics; United Way St. Croix and Red Cedar Valleys; and University of Wisconsin-Madison (UW) Extension.

SCCPH in collaboration with the Pierce-St. Croix County Healthier Together Leadership Team designed and implemented a CHA survey to gather input directly from residents and stakeholders. To deepen our understanding, SCCPH with the support of Western Wisconsin Health conducted 24 key informant interviews and 3 focus groups with individuals and representatives from a broad cross-section of the community. These interviews included leaders from various sectors such as healthcare, education, social services, local government, business, and non-profit organizations, with intentional outreach to include voices that represent minority populations and underserved groups.

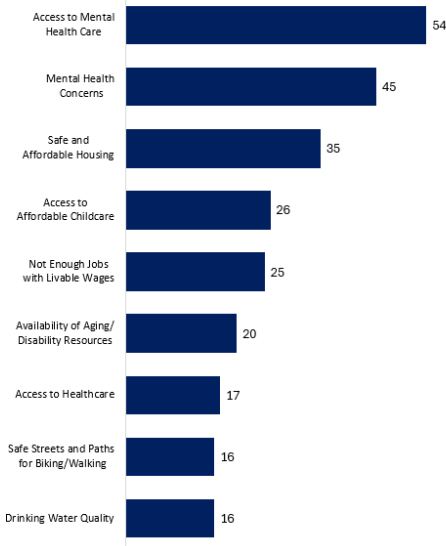
Next in the CHA process, SCCPH, compiled the findings from the survey, interviews, and secondary data. With support from UW Extension, it was shared it with over 600 community partners including the St. Croix County Board of Supervisors. Partners were all asked to review the data and participate in our prioritization Community Needs Forum. During the forum, attendees reviewed the assessment findings, provided feedback and discussion on the data, and identified and voted on priority areas for the upcoming CHIP.

Data Assessment and Findings

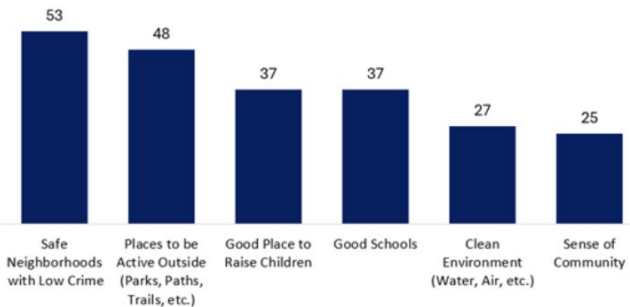
Primary Data: Community Health Assessment Survey

The Pierce-St. Croix County Healthier Together Coalition collaboratively designed the CHA survey (Appendix A). To ensure diverse representation of county respondents, Public Health mapped the sectors and populations of the community and then conducted targeted outreach, paying special attention to including disproportionately impacted and underserved populations. Surveys were distributed at local libraries, community events, businesses, and distributed directly to clients of St. Croix County Public Health and Behavioral Health services. Surveys were also shared digitally through the HT website, County websites, social media platforms, and distributed via email to 210 community partners.

Top Health Priorities Identified by Percent of Total Responses



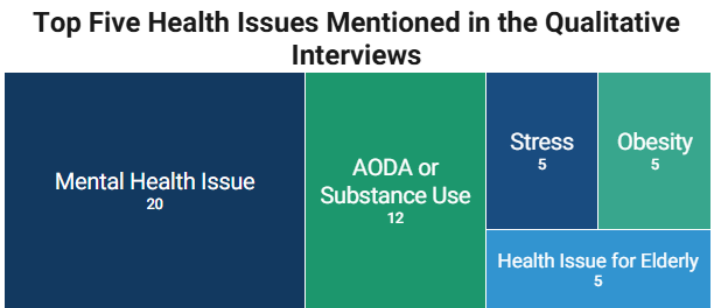
Identified County Strengths by Percent of Total Responses



To reach Spanish-speaking residents, the survey was translated into Spanish and promoted within Spanish-speaking communities. These efforts resulted in over 686 completed surveys by St. Croix County residents. SCCPH analyzed the quantitative survey results and qualitative survey responses from St. Croix County residents using stratified analysis by age, sex, and ZIP code (Appendix B).

Primary Data: Community Conversations

The results from the CHA survey were used in part to develop the approach to the qualitative community conversations: key informant interviews and focus groups. These conversations were designed to explore emerging CHA survey themes more deeply and gather additional perspectives from the community. A health equity lens was utilized in the design of the community conversations to gather information about the populations at the greatest health risk.



Participants for the focus groups and key informant interviews were intentionally selected to represent all community service sectors and populations, including those disproportionately impacted and Spanish-speaking population whose voices have not been historically represented (Appendix G). Participants also were selected from all geographic areas of St. Croix County. Before conducting the interviews, five staff members received training in qualitative interview techniques to ensure consistency and reliability for gathering community voices.

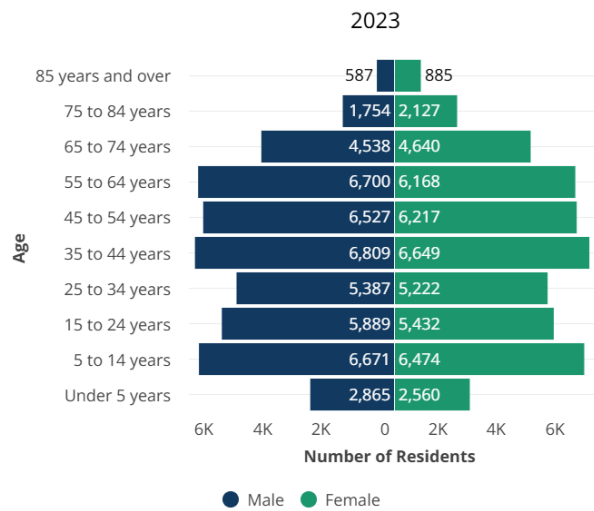
After the interviews and focus groups were completed, two staff members participated in a multi-day training on qualitative coding and analysis provided by the Health and Well-Being Institute at UW Extension. Using the Guide to Coding and Analyzing Qualitative Data also provided by the Health and Well-Being Institute at UW Extension, the team conducted a qualitative analysis of the community conversation data in partnership with Western Wisconsin Health area hospital and clinics (Appendix C).

Secondary Data

In addition to the primary data collected through surveys and interviews, the team compiled secondary data on St. Croix County and its residents from 18 different local, state, and national sources to build a comprehensive community data dashboard (Appendix D). This dashboard included the selection of key health indicators, analysis of trends, and application of an equity lens throughout the data analysis process. It also provided additional context and supported the triangulation of findings across all data collected.

Demographics

St. Croix County Population by Age and Sex



St. Croix County Race/ Ethnicity

2020

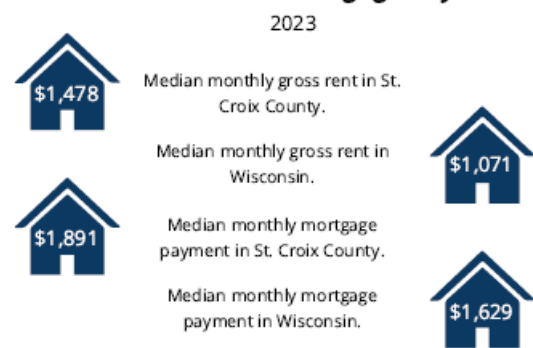
Race/ Ethnicity	Number of People
American Indian and Alaska Native	324
Asian	984
Black or African American	653
Hispanic or Latino	2,679
Native Hawaiian and Other Pacific Islander	33
Other Race	1,073
Two or More Races	4,242
White	86,227

US Census Bureau, 2020

The total population of St. Croix County in 2023 was 94,819 people with the majority being between 35 and 64 years old (20,036 male 35-64 and 19,034 female 35-64)⁵. The population of St. Croix County is predominately white (89.6%) follow by two or more races (4.4%) and Hispanic or Latino (2.8%). The county is split evenly between rural and urban residents (49.5% rural and 50.5% urban)⁵. The overall population has increased by 10% in the last 10 years and is projected to continue to grow⁵. The primary language in St. Croix County is English, however, 9.3% of households spoke another language besides English at home⁴. Spanish and Pennsylvania Dutch are also known to be spoken in the county.

The median annual income in St. Croix County in 2024 was \$102,482, with a living hourly wage of \$28.12 for each adult for a household of two working adults with two children⁵. The unemployment rate in St. Croix County was 3.3% as of August 2025 and has been decreasing from peak at 5% in February 2025^{5,7}. Additionally, on average, a family spends 13.6% of income is spent on childcare in St. Croix County⁵.

Median Rent and Mortgage Payments



The median monthly gross rent in 2023 in St. Croix County was \$1,071 and the median monthly mortgage was \$1,478⁵. However, in 2024, most of St. Croix County's top jobs paid under \$50,000 annually and could only afford \$1,250 in monthly housing costs without being burdened⁶.

Health Challenges

Many different health challenges are faced by the residents of St. Croix County. This includes healthcare access, health disparities, and some health behaviors. There are 1,900 residents for every primary care provider in St. Croix County, 2,180 residents for every dentist in the county, and 530 residents for every mental health provider⁵. Black and Hispanic residents face the highest disparities when it comes to insurance with 16.2% and 14.6% of residents respectively not having health insurance⁵.

Additionally, as of 2022, 32.7-41.9% of adults in St. Croix County by zip code were obese⁵. In 2023, 14 hospital visits were due to opioid overdose, and 37 per 100,000 deaths were attributed to alcohol in St. Croix County⁵.

Between 2023 and 2025 90 men and 118 women in St. Croix County visited the emergency room for suicidal thoughts⁵. Additionally, about 1 in 10 high school boys and 2 in 10 high school girls in St. Croix County seriously considered suicide in 2023⁵.

Vulnerable Populations in St. Croix County

St. Croix County’s vulnerable populations include not only older residents and individuals with disabilities but also low-income groups, children in poverty, those with unstable housing, non-English speakers, and people reliant on Medicaid or similar programs.

The population of older adults in St. Croix County continues to grow and is estimated to increase 154% in 20 years⁵. As of 2023, 27.4% of adults 65+ in St. Croix County were living alone⁵. Additionally, as of 2023, 7% of households in the county were living in poverty and 18% were Asset Limited,

Age-Adjusted Chronic Disease Prevalence Among Adults



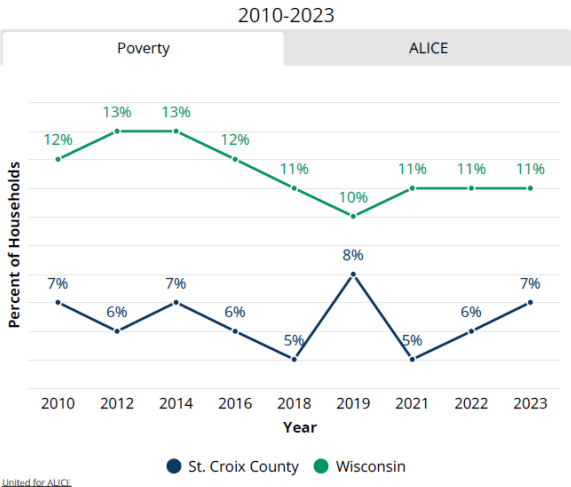
Emergency Room Visits Due to Suicidal Thoughts

St. Croix County, 2023-2025

	18 and Under	19 to 37	38 to 56	57 to 74	75+
Male	18	34	25	12	1
Female	50	39	17	11	1

CDC ESSENCE, not publicly available

Percent of Households in Poverty or ALICE



Income Constrained, Employed (ALICE), with income above the federal poverty line but not enough to afford basic expenses in St. Croix County⁵.

Community Assets or Resources

A summary and comprehensive list of St. Croix County community assets and resources that were identified in the qualitative interviews, focus groups, and community review can be found in Appendix F.

Prioritization of Health Issues

Process

Part of the final phase of the CHA was to prioritize the health issues to identify the top issues that would be addressed in the 2026-2030 CHIP. This prioritization began with compiling all the qualitative and quantitative primary and secondary data. SCCPH partnered with UW Extension and planned a Community Needs Forum event on August 19, 2025, to bring community partners together to review findings and prioritize needs.

The compiled primary and secondary data was shared with community partners in an invitation to attend the prioritization Community Needs Forum. Participants were asked to review the data prior to the forum and come prepared to discuss the top health needs of the community. At the forum, 43 in person and online community partners and members reviewed and discussed the data findings (Appendix G). Participant feedback, including specific concerns related to mental health and social needs, was incorporated prior to voting on the top issues.

A multi-voting technique was used to select key health priorities. This structured decision-making method involved two rounds of voting. This was conducted using the web-based audience engagement platform, Mentimeter, to systematically narrow down the list of community health concerns.

Round One: Participants were presented with the top health concerns in St. Croix County. Health concerns were included based on data collected and from the forum discussion. Initially, they were asked to prioritize their top three health concerns. The results were analyzed to determine the most frequently selected health concerns by all participants.

Round Two: Based on the prioritization from the first round, a shortened list of health concerns was generated. Participants then voted for their top two health concerns. This round helped further prioritize health concerns for the community.

Identified Priorities

Based on all the data gathered in the CHA, the prioritization through the Community Needs Forum, further analysis from the SCC CHA/CHIP Steering Team, and alignment analysis with the SHIP (Appendix E) the two health priorities 2026-2030 St. Croix County Community Health Improvement Plan are:

Mental Health

Mental health is essential and deeply connected to our quality of life. Mental health affects our ability to manage stress, maintain relationships, succeed at work or school, and take care of ourselves and our families. By improving access to mental health services, strengthening crisis care, and promoting overall emotional wellness, our community can help ensure that everyone in St. Croix County has the opportunity to live well, both day to day and over a lifetime.

Social and Community Conditions

Social and community conditions shape the environments where people in St. Croix County live, learn, work, play, worship, and age. These conditions influence health, daily functioning, and overall quality of life. They include a wide range of factor, such as access to safe and accessible housing, expanding aging and disability resources, and other community supports. Every community within St. Croix County is unique, therefore, social and community conditions may look different across our county. Addressing these factors can help create healthier, safer, and more supportive environments for all St. Croix County residents.

Next Steps

Community Health Improvement Planning (CHIP)

As the 2026-2030 CHIP is developed, SCCPH will reach to its community partners to develop goals, objectives, and action plans that are measured and adapted as needed to improve the health of the county over the five years of the plan.

References

1. National Association of County and City Health Officials. (2025). *MAPP 2.0*.
<https://www.naccho.org/resource-hub-articles/mapp-2-0>
2. County Health Rankings and Roadmaps. (2025). *2014 County health rankings & roadmaps model of health*. <https://www.countyhealthrankings.org/resources/2014-county-health-rankings-roadmaps-model-of-health>
3. St. Croix County Public Health. (n.d.) *Public health*. <https://www.sccwi.gov/174/Public-Health>
4. DATA USA. (n.d.) *St. Croix County, WI*. <https://datausa.io/profile/geo/st-croix-county-wi>
5. Appendix B. Secondary Data Dashboard
6. St. Croix County Economic Development Corporation. (2025) *Housing Study*.
<https://stcroixedc.com/housing-study/>
7. YCharts. (2025). *St. Croix County, WI unemployment rate*.
https://ycharts.com/indicators/st_croix_county_wi_unemployment_rate#

Appendices

Appendix A. Survey Tools

[View the Survey in English](#)

[View the Survey in Spanish](#)

PIERCE COUNTY Public Health Healthier Together St. CROIX COUNTY Public Health Healthier Together	PIERCE COUNTY Public Health Healthier Together St. CROIX COUNTY Public Health Healthier Together
Community Health Survey 2024	Encuesta de Salud Comunitaria 2024
Thank you for taking the time to fill out this survey. This survey was created as a way to get the community's opinion about factors that impact community health in Pierce or St. Croix County. This survey is for people who live in Pierce or St. Croix County and takes about 5-10 minutes to complete. All answers are anonymous.	Gracias por tomarse el tiempo para completar esta encuesta. Esta encuesta fue creada para obtener la opinión de la comunidad sobre los factores que impactan la salud comunitaria en los condados de Pierce o St. Croix. Esta encuesta es para personas que viven en los condados de Pierce o St. Croix y toma aproximadamente entre 5 y 10 minutos para completarla. Todas las respuestas son anónimas.
1. Are you 18 or older? Yes ___ No ___	1. ¿Tiene 18 años o más? Sí ___ No ___
2. What county do you live in? ___ Pierce ___ St. Croix	2. ¿En qué condado vive? ___ Pierce ___ St. Croix
3. Zip Code of residence ___	3. Código postal de residencia ___
4. What are the best parts about the county you live in? Please choose up to three. <input type="checkbox"/> Good place to raise children <input type="checkbox"/> Good Schools <input type="checkbox"/> Access to affordable health care <input type="checkbox"/> Clean environment (water, air, etc.) <input type="checkbox"/> Good jobs/job opportunities <input type="checkbox"/> Sense of community <input type="checkbox"/> Access to healthy foods <input type="checkbox"/> Access to dental care <input type="checkbox"/> Safe neighborhoods/low crime <input type="checkbox"/> Access to healthy foods <input type="checkbox"/> Places to be active outdoors (parks, paths, trails, and green space) <input type="checkbox"/> Affordable housing <input type="checkbox"/> Low cost of living <input type="checkbox"/> Access to transportation	4. ¿Cuáles son las mejores partes del condado donde vive? Por favor elija hasta tres. <input type="checkbox"/> Un buen lugar para criar niños <input type="checkbox"/> Buenas escuelas <input type="checkbox"/> Acceso a atención médica asequible <input type="checkbox"/> Ambiente limpio (agua, aire, etc.) <input type="checkbox"/> Trabajo de calidad/opportunidad de trabajo <input type="checkbox"/> Sensación de comunidad <input type="checkbox"/> Aceptación de la diversidad/comunidad acogedora <input type="checkbox"/> Acceso a dentistas <input type="checkbox"/> Barrios seguros/baja delincuencia <input type="checkbox"/> Acceso a alimentos saludables <input type="checkbox"/> Lugares para estar activo al aire libre (parques, senderos, y espacios verdes) <input type="checkbox"/> Viviendas asequibles <input type="checkbox"/> Bajo costo de vida <input type="checkbox"/> Acceso al transporte
What is the main concern in each of the following categories you would like to see public health and their partners work on?	¿Cuál es la principal preocupación en cada una de las siguientes categorías en las que le gustaría ver trabajo por parte de la salud pública y sus asociados?
5. Health Behaviors and Outcomes Please choose one <input type="checkbox"/> Excessive alcohol use <input type="checkbox"/> Drug use <input type="checkbox"/> Tobacco/vaping use <input type="checkbox"/> Physical inactivity <input type="checkbox"/> Injuries and accidents <input type="checkbox"/> Oral or dental health <input type="checkbox"/> Access to healthy foods <input type="checkbox"/> Overweight and obesity <input type="checkbox"/> Mental health concerns <input type="checkbox"/> Chronic diseases (cancer, heart disease, diabetes) <input type="checkbox"/> Communicable diseases (measles, COVID, Lyme disease, sexually transmitted infections, etc.) <input type="checkbox"/> Access to healthy foods	5. Comportamientos y Resultados de Salud Por favor elija uno <input type="checkbox"/> Excesivo consumo de alcohol <input type="checkbox"/> Consumo de drogas <input type="checkbox"/> Consumo de tabaco y vapeo <input type="checkbox"/> Inactividad física <input type="checkbox"/> Lesiones y accidentes <input type="checkbox"/> Salud bucal o dental <input type="checkbox"/> Acceso a alimentos saludables <input type="checkbox"/> Sobrepeso y obesidad <input type="checkbox"/> Problemas de salud mental <input type="checkbox"/> Enfermedades crónicas (cáncer, trastornos del corazón, diabetes) <input type="checkbox"/> Enfermedades contagiosas (sarampión, COVID, enfermedad de Lyme, infecciones de transmisión sexual, etc.)
6. Social and Economic Factors Please choose one <input type="checkbox"/> Education opportunities <input type="checkbox"/> Not enough social and/or community support <input type="checkbox"/> Violence in the home or the community <input type="checkbox"/> Not enough jobs with livable wages <input type="checkbox"/> Unemployment <input type="checkbox"/> Access to affordable childcare <input type="checkbox"/> Availability of aging and/or disability resources <input type="checkbox"/> Discrimination or unfair treatment	6. Factores Económicos y Sociales Por favor elija uno <input type="checkbox"/> Oportunidades educativas <input type="checkbox"/> No hay suficiente apoyo social y/o comunitario <input type="checkbox"/> Violencia en el hogar o la comunidad <input type="checkbox"/> No hay suficientes puestos de trabajo con salarios dignos <input type="checkbox"/> Desempleo <input type="checkbox"/> Acceso a cuidado infantil asequible <input type="checkbox"/> Disponibilidad de recursos para personas mayores y con discapacidad <input type="checkbox"/> Discriminación o trato injusto
7. Physical Environment Please choose one <input type="checkbox"/> Air pollution <input type="checkbox"/> Drinking water quality <input type="checkbox"/> Climate change <input type="checkbox"/> Safe and affordable housing <input type="checkbox"/> Access to transportation <input type="checkbox"/> Safe streets and paths for biking and walking <input type="checkbox"/> Access to safe places to be active outdoors <input type="checkbox"/> Access to high-speed internet	7. Entorno Físico Por favor elija uno <input type="checkbox"/> Contaminación del aire <input type="checkbox"/> Calidad del agua potable <input type="checkbox"/> Cambio climático <input type="checkbox"/> Vivienda segura y asequible <input type="checkbox"/> Acceso a transporte <input type="checkbox"/> Calles y senderos seguros para andar en bicicleta y caminar <input type="checkbox"/> Acceso a lugares seguros para estar activo al aire libre <input type="checkbox"/> Acceso a internet de alta velocidad
8. Clinical Care Please choose one <input type="checkbox"/> Access to healthcare <input type="checkbox"/> Access to dental care <input type="checkbox"/> Access to reproductive and sexual health care <input type="checkbox"/> Access to mental health care <input type="checkbox"/> Low rates of routine vaccinations (childhood, flu, etc.) <input type="checkbox"/> Access to dentists <input type="checkbox"/> Limited use of preventative care services (annual exam, mammogram, colonoscopy, etc.)	8. Atención Clínica Por favor elija uno <input type="checkbox"/> Acceso a atención médica <input type="checkbox"/> Acceso a dentistas <input type="checkbox"/> Acceso a atención de la salud reproductiva y sexual <input type="checkbox"/> Acceso a atención de salud mental <input type="checkbox"/> Bajas tasas de vacunación rutinaria (infancia, gripe, etc.) <input type="checkbox"/> Disponibilidad de servicios de atención preventiva (examen anual, mamografía, colonoscopia, etc.)
9. Comments or other health problems in your community that you would like your local public health department and their partners to address:	9. Comentarios u otros problemas de salud en su comunidad que le gustaría que aborden su departamento de salud pública local y sus asociados:

Appendix B. Survey Results

[View the Survey Results](#)



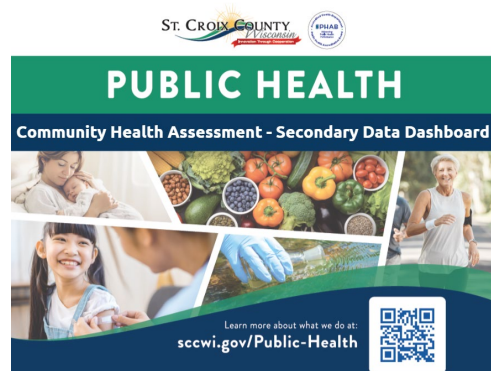
Appendix C. Community Conversations Dashboard

[View the Community Dashboard](#)



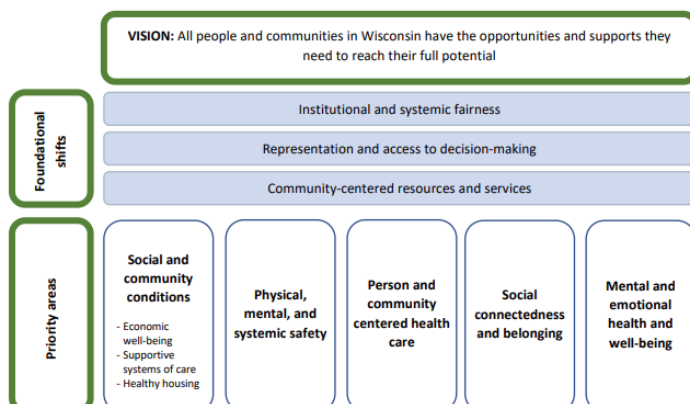
Appendix D. Secondary Data Dashboard

[View the Secondary Data Dashboard](#)



Appendix E. SHIP

2023-2027 State Health Improvement Plan (SHIP) Framework



Appendix F. Resource List

Community Health Need	Community Assets
Mental Health	<ul style="list-style-type: none"> Arbor Place Charlie Health Intensive Outpatient Program (IOP) Criminal Justice Collaborating Council (CJCC)- Behavioral Health Subcommittee Farmer Angel Network (FAN) Wisconsin Farmer Wellness Program Northwest Counseling & Guidance Clinic Adulteen Counseling Hennepin County MN Medicaid funded Urgent Care for Mental Health and addiction Mental Health First Aid Trainings Mental Health Network Monarch House Mindful Solutions Make it OK Ambassador National Alliance on Mental Illness (NAMI) Peace Tree Counseling SCC Behavioral Health Co-responders School-based Programs and Support SAMHSA U-will The Butterfly Path Change to Chill Wellness Warriors Western Wisconsin Health Mental Health Urgent Care and Inpatient 211/988/911

Aging and Disability Resources	<ul style="list-style-type: none"> • Aging and Disability Resource Center (ADRC) • ADRC Newsletter • SCC Dementia Care Specialist Program • Seniors Staying Put • Touching Hearts at Home • Meals on Wheels
Housing	<ul style="list-style-type: none"> • Assistance and Resource Center • Northwoods Homeless Shelter • Operation Help • Our Neighbors' Place • River Falls Housing Authority • Prescott Housing Authority • Rural Housing • St. Croix Valley Habitat for Humanity • St. Croix Valley Job Center • Salvation Army – Grace Place • Turning Point • THUG Life • WestCAP • ONYX House
Healthcare	<ul style="list-style-type: none"> • Federally Qualified Health Centers (FQHC) • Hudson Physicians now in New Richmond • Pierce County Dental Clinics • Pierce/St. Croix Free Clinic • SCC Hospital/Clinic Systems • Simple Health Lifestyle Medicine Program • Wisconsin Association of Free and Charitable Clinics • Baldwin Community Paramedic Program • HHS Narcan Program • SCC Co-Responders • WWH/ EMS partnership educate people who refuse EMS transport to hospital
Substance Use	<ul style="list-style-type: none"> • WI Quit Line • MBC Collaborative • 211 Wisconsin Addiction Recovery Helpline (WARH) • Medication disposal programs • Hudson Alano Club • New Richmond Alano Club • St. Croix Valley Restorative Services • St. Croix County Treatment Court • River Falls Alano Club
Latinx Assets	<ul style="list-style-type: none"> • Baldwin Clinics Spanish Interpreter • Bilingual Patient Care Teams and Advocates • Mexican Consulate/St. Mary's Hospital: Spanish speaking Window and related services

	<ul style="list-style-type: none"> • Minneapolis Aging and Disability Resources that assist Latina population • St. Paul physical clinic for Spanish speakers • Parent Cafes lead by Spanish speaking facilitators
Additional Assets	<ul style="list-style-type: none"> • 211 • AmeriCorps • Diaper Banks • Lions Club • Operation Help in Hudson • Rotary Club • NW Tech school doing promotion of their degrees to get people into better paying jobs • Workforce Center

Appendix G. Community Partners

Community Conversation Participants by Sector

- **Aging**
 - 2 ARDC
 - 1 GlenHaven
- **Business**
 - 1 Wink Farm
 - 1 Bear Buddies
 - 1 Convenience Store
- **Education**
 - 1 SCC High School
 - 2 Hudson Schools
 - 1 Northwood Tech
- **Justice**
 - 1 SCC Sheriff's Office
 - 1 SCC Court
- **Hispanic Populations**
 - 1 Family Resource Center
 - 1 Western Wisconsin Health
 - 1 SCC Public Health
- **Non-Profits**
 - 1 St. Croix Valley Food Bank
 - 1 Operation Help
 - 1 St. Croix YMCA
 - 1 Five Loaves
 - 1 WestCAP
 - 1 United Way
- **Mental Health**
 - 1 Somerset Schools

- 1 SCC Middle School
- 1 New Richmond Schools
- 1 Not Public
- 1 Not Public
- 1 Not Public
- **Government**
 - 1 SCC Health and Human Services
 - 2 SCC Behavioral Health
 - 1 SCC Child Protective Services
 - 1 SCC Medical Examiner
 - 1 Comprehensive Community Services

Prioritization Meeting Attendees

- 5 Community Members
- 4 SCC Public Health
- 4 SCC Health and Human Services
- 2 SCC Community Development Division
- 1 SCC Aging and Disability Resource Center
- 1 Child Support Agency
- 1 Family Resource Center
- 1 Pierce County Public Health
- 5 UW Extension
- 2 Hudson Public Library
- 2 Baldwin Public Schools
- 1 New Richmond Public Schools
- 1 United Way
- 2 Charlie Health
- 1 Western Wisconsin Health
- 1 Accessible Space
- 1 Christian Community Home
- 1 St. Croix Valley Habitat for Humanity
- 1 Our Neighbors' Place
- 1 CASA of St. Croix County, Inc.
- 1 New Richmond Police Department
- 1 St. Croix Valley Food Bank
- 1 YMCA in Hudson
- 1 UW Valleys
- 1 West CAP